

CFM Maintenance

Planned maintenance
made easy



Stay on top of things – Web-based PMS with approval process, cash flow planning & categorising of jobs.

CFM Maintenance gives you full visibility of your fleet status and lets you regain control over the maintenance jobs of your fleet. You can centrally define and distribute jobs, set approvals levels, define component trees, attach any documents and monitor all overdue jobs of your entire fleet. Creating generic jobs or setting up a standardised equipment register has never been easier.

In order not to lose track while creating jobs and managing overdues, CFM Maintenance simply divides these into two categories: Critical and non-critical. This division allows you to be aware, which of your

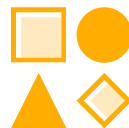
jobs are class-relevant and of high priority at any time. Overdue jobs are highlighted to further ease process control management. Through the clear and structured design of the solution you have the most relevant data displayed on the dashboard, always, without having to switch between tabs.

To avoid peaks, CFM Maintenance offers the possibility of dynamic planning. This allows you to reschedule jobs at short notice and ensure that your jobs are distributed evenly, leading to maximum efficiency. Thanks to a direct connection to CFM Purchase, requests can be initiated directly in CFM Maintenance.



Integrated

Benefit from the deeply integrated environment provided by CFM.



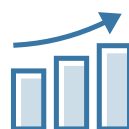
Individual

Define maintenance jobs and intervals according to your requirements.



Focused

By categorising your jobs, you are always on top of things.



Efficient







Analyse and sustainably increase your efficiency.

Easily distribute new jobs

CFM Maintenance enables you to enter all equipment and spares in the "Equipment Register" and precisely define jobs according to your requirements. Define jobs that must be carried out for specific equipment or simply create generic jobs which will be automatically assigned to your complete fleet.

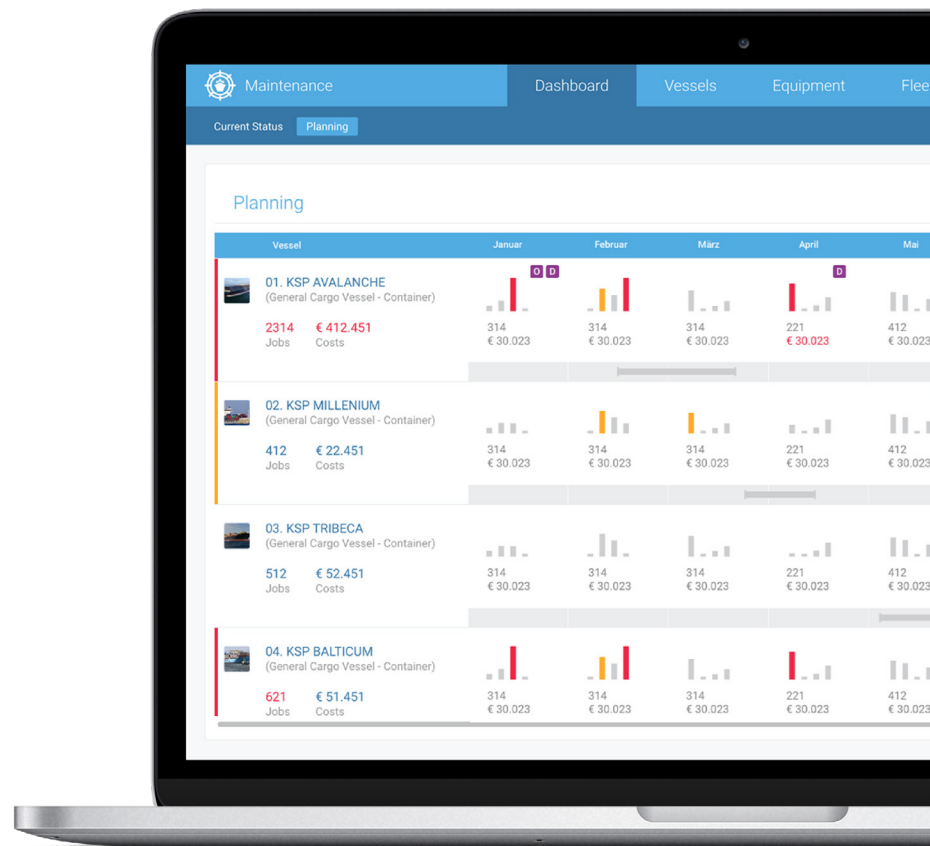
You can also create checklists for every job to make it even more convenient.

Key features

-  Central definition and distribution of jobs
-  Dynamic planning option
-  Central and straightforward management of all equipment and spares
-  Connected to CFM Purchase
-  Definition of jobs and intervals according to your requirements
-  Cash flow planning option

Cash flow planning

In order to control the efficiency of your maintenance workflow and to optimise it sustainably, the cash flow planning option gives you the opportunity to make precise statements about the distribution of your jobs as well as the respective costs and the corresponding utilisation of your employees. This allows you to optimise the efficiency of your maintenance tasks in the long run and to avoid peaks.



About Hanseaticsoft

Hanseaticsoft was founded in 2009 by Alexander Buchmann. Buchmann and his team draw on several years of experience in the software department of a medium-sized shipping company in Hamburg, the third largest container harbour in Europe. In Hanseaticsoft, the idea of a new software concept was finally realised: giving enterprises access to new and efficient

technologies by means of intuitive software solutions. Today Hanseaticsoft has more than 60 employees. It is now part of Lloyd's Register Group, one of the world's leading providers of professional services for engineering and technology – improving safety and increasing the performance of critical infrastructure for clients in over 75 countries worldwide.